



VICTORIA POLICE THEFT REDUCTION STRATEGY

Presentation to the
Melbourne International Vehicle Crime Conference

14 June 2007

by

Assistant Commissioner Ken D. Lay

The presentation



VICTORIA POLICE

The problem

Previous strategies

The Vehicle Theft Reduction Strategy 2007

The continuing challenges

The problem



VICTORIA POLICE

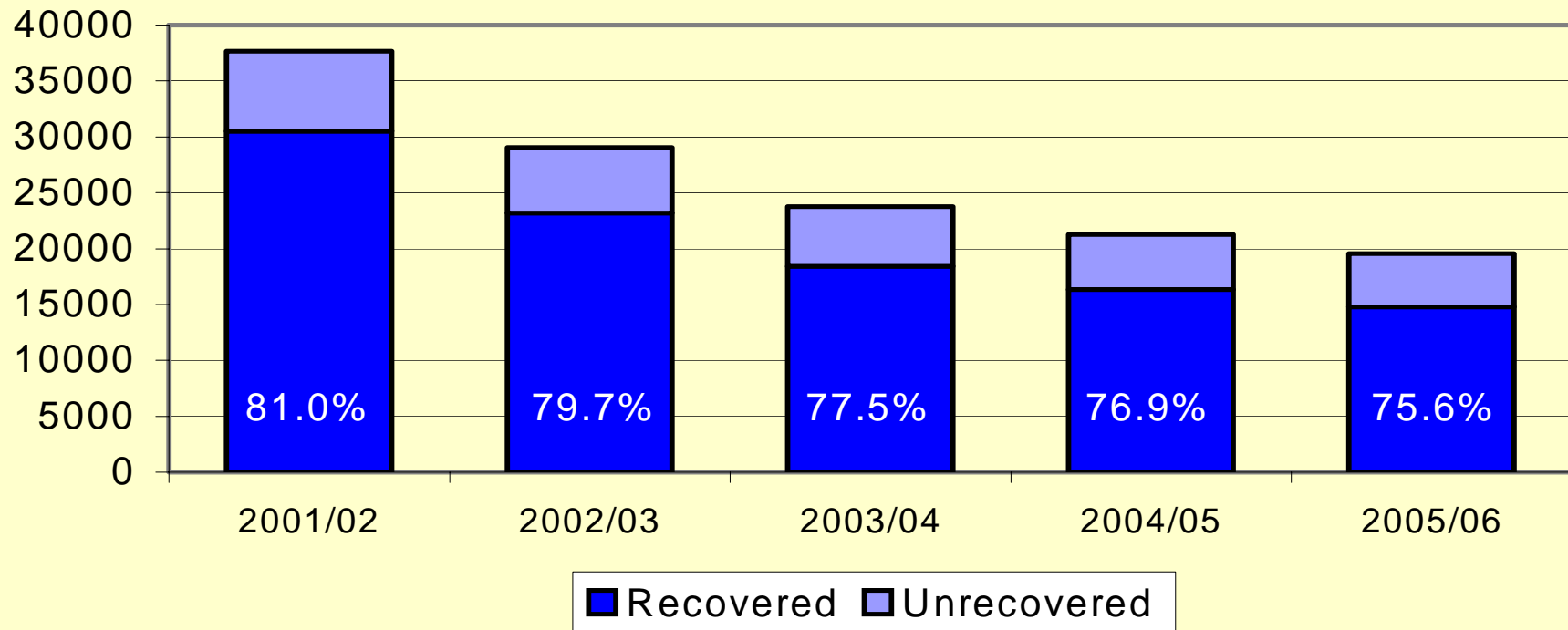
- 2001/2002 saw 37,673 motor vehicles stolen in Victoria alone
- Cost to the community is in excess of \$100,000,000
- Social impact is incalculable
- Drivers included:
 - Poor vehicle security
 - Opportunities for organised crime
 - Lack of focus by police and the community
 - Police practices

The problem



VICTORIA POLICE

Recorded Number of Thefts of Motor Vehicles 2001/02 - 2005/06



The presentation



VICTORIA POLICE

The Problem

Previous strategies

The Vehicle Theft Reduction Strategy

The continuing challenges



Victorian Government Inquiry into Motor Vehicle Theft 2001

- Terms of Reference
- Recommendations included:

Industry Action

The role of the N.M.V.T.R.C.

Recommendations regarding legislative change

The conduct of police investigations

Recommendations regarding immobilisers

Other recommendations



Operation Vehicle Watch in 2002

- Whole of organisation commitment
- Re establishment of the Organised Motor Vehicle Theft Squad
- TOMCAT Task Forces in the five Regions
- Increased training capacity at training and Detective level
- Increased analytical capacity
- Operational tactics developed and aggressively monitored
- High level engagement with stakeholders
- Re focused the organisation on the crime
- Developed a capacity to lobby government



Victoria Police Strategic Plan – The Way Ahead (2003-2008)

- Set a target to reduce overall crime by 5%
- Focus on developing an intelligence based approach to resolving Crime issues
- Commitment to increase the capacity of our people to understand and resolve crime issues
- Focus on the need to include the community and partners in resolving all crime issues

The presentation



VICTORIA POLICE

The Problem

Previous strategies

The Vehicle Theft Reduction Strategy 2007

The continuing challenges

Where to from here?

Victoria Theft Reduction Strategy 2007



VICTORIA POLICE

Vehicle Theft Reduction Strategy 2007

- Developing partnerships
- Enhancing communication
- Improving investigative focus
- Increase use of intelligence



DEVELOPING PARTNERSHIPS

- Support the NMVTRC through consultation & resource sharing
- Involve Neighbourhood Watch in contributing to the effort
- Encourage Local Safety Committees to develop strategies
- Develop more effective partnerships:

Stakeholders

Industry

Government

Transport franchisors

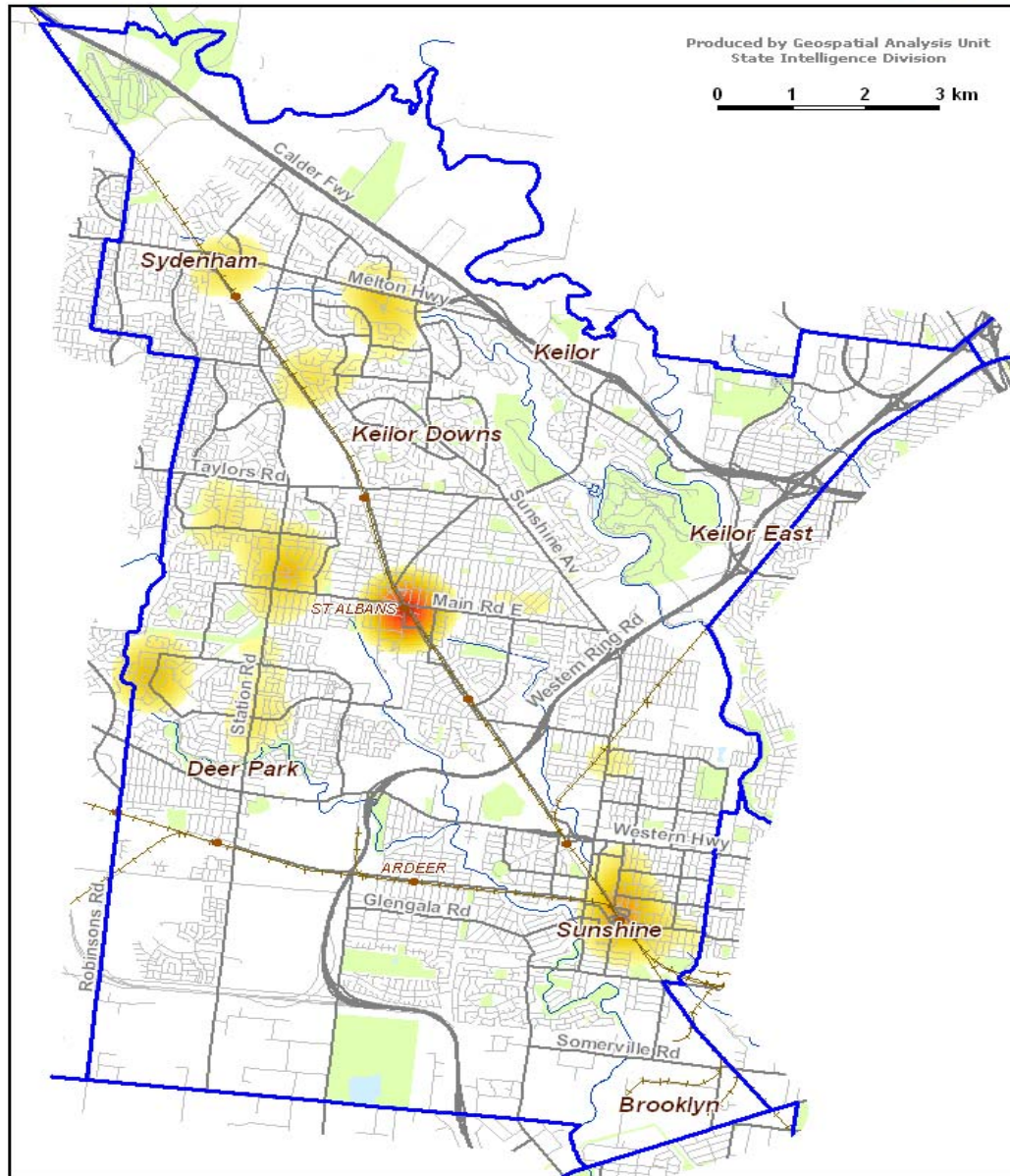
Brimbank District - Theft Of Motor Vehicle hotspots

May 2007



Produced by Geospatial Analysis Unit
State Intelligence Division

0 1 2 3 km





COMMUNICATION

- Raise public & organisational awareness of vehicle related theft
- Increase the access of the community to information, trends and programs
- Develop and support industry forums



INVESTIGATIONS

- Targeted Investigations by Crime Department and TOMCAT's
- Support Vic Roads in ensuring accuracy of registration database
- Maintain focus on high risk factors influencing the incidents of theft
- Increase the police focus on vehicle related arson
- Enhance the capacity of police personnel to investigate offences
- Continued patrol focus on checking high risk vehicles



INTELLIGENCE

- Improve intelligence regarding vehicle related theft
- Enhance access and dissemination of intelligence
- Research and develop initiatives utilising technologies
- Increase police managers awareness of trends

The presentation



VICTORIA POLICE

The Problem

Previous strategies

The Vehicle Theft Reduction Strategy 2007

The continuing challenges

The continuing challenges



VICTORIA POLICE

- **The youth strategy**
- **Maintaining the police and community focus**
- **Black market access to stolen parts**
- **Repairable write offs**
- **Understanding linkages with other volume crime**
- **A 20 % reduction in reported offences**